

ELL Virtual Learning

9-12 LEP Emerging

Analyze Character

April, 13 2020



Lesson: April 13, 2020

Objective/Learning Target:

I can analyze how complex characters develop over the course of a text.



Quick Write



Write what you know about

Character: _____

Description: _____

Dialogue: _____



["Click Here to See If You Were
Right"](#)



Next time on LEP Emerging

We will begin reading “Building Bridges”



Building Bridges

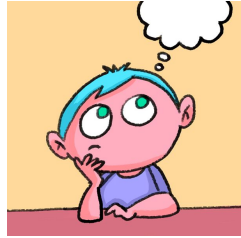
Genre: Short Story **Reading Level:** Lexile® 720L

A teenage girl who dreams of becoming an engineer needs her grandmother's permission to work on a bridge project. Mama Lil stubbornly refuses, but finally gives in when she realizes that she can't block her granddaughter's dream.

Analyze Character



Authors show what a character is like with **description** and **dialogue**. Read the passage, and in the next slide, write how description and dialogue show how Mama Lil is like.



Mama Lil and I had been butting heads ever since I could remember. And the older I got, the more at odds we were. She thought I weighed too much and dressed badly. I thought she smoked too much and overdid it with her fake gold chains. Time after time, she'd asked me, "How you ever gonna land a decent man with them chunky arms and those T-shirts that put your navel on parade? No self-respecting seventeen-year-old should be letting it all hang out like *that*."

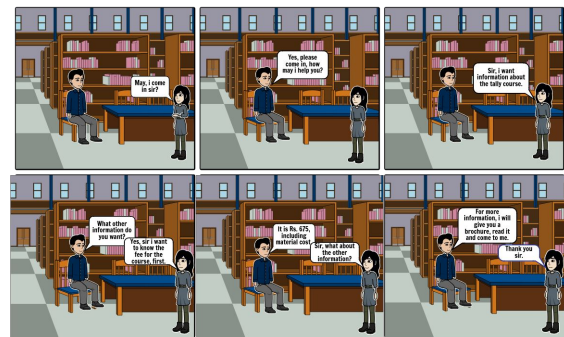


Mama Lil

[Directions "Click Here"](#)

Description: _____

Dialogue: _____



Create your own at storyboard That

A colorful illustration of several stylized figures in business attire working together to build a city. They are standing on large, interlocking puzzle pieces that form the base of the city. One figure holds a large red gear, another holds a megaphone, and others are carrying blocks or standing on different colored puzzle pieces (blue, yellow, orange, red). The background features a light blue sky with two white clouds and a bright sun with rays. The city skyline includes various buildings, including a tall blue skyscraper and a red building with a white grid pattern.

More Practice

What do description and dialogue tell you about Mama Lil's
"Character"

Submit an oral response to flipgrid
["Click Here to Record Response"](#)